

Stamp Rental Catalog 2017

nu way **Rents**



SCOFIELD
SYSTEMS



4190 Hoffmeister Ave. St. Louis, MO 63125-2298
314.544.1214 • FAX 314.544.1656 • 800.542.1214

3100 South Ten Mile Dr. Jefferson City, MO 65109-1013
573.893.8766 • FAX 573.893.8737 • 800.345.9154

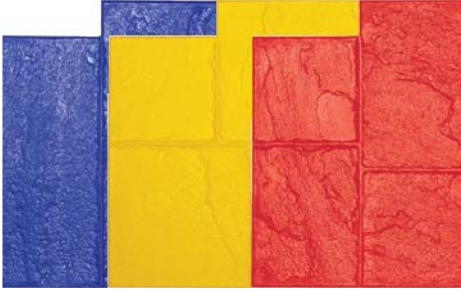
4788 Old Cape Road East Jackson, MO 63755-3816
573.204.0100 • FAX 573.204.0411 • 800.599.9854

115 Resource Drive Wentzville, MO 63385-1560
636.327.8877 • FAX 636.327.4944 • 888.999.6883

7651 East Resource Drive Troy, IL 62294-3177
618.288.3400 • FAX 618.288.3410 • 888.315.1100

Visit us at nuwayinc.com

24 X 24 Rough Cut Ashlar



FM100-B	Rental Class # F421	\$185.00
FM100-Y	Rental Class # F493	\$185.00
FM100-R	Rental Class # F492	\$185.00
FM100-FR	Flex Stamp Rental Class # F490	\$95.00
Rental Rates		
Daily	Weekly	Monthly
\$15	\$55	\$135

23" X 23" Ashlar Cut Slate



FM3125-B	Rental Class # F426	\$173.00
FM3125-R	Rental Class # F495	\$173.00
FM3125-Y	Rental Class # F497	\$173.00
FM3125-FR	Flex Stamp Rental Class # F496	\$86.00
Rental Rates		
Daily	Weekly	Monthly
\$15	\$55	\$135

30" X 30" Random Stone



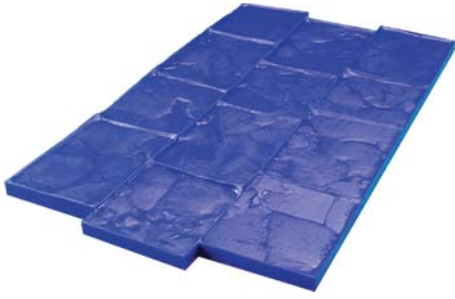
FM700-B	Rental Class # F434	\$208.00
FM700-R	Rental Class # F486	\$208.00
FM700-Y	Rental Class # F485	\$208.00
FM700FR	Flex Stamp Rental Class # F487	\$104.00
Rental Rates		
Daily	Weekly	Monthly
\$15	\$55	\$135

26" X 46" European Fan



FM650F	Flex Stamp Rental Class # F438	\$110.00
FM650	Rental Class # F412	\$233.75
Rental Rates		
Daily	Weekly	Monthly
\$15	\$55	\$135

17" X 30" London Cobble



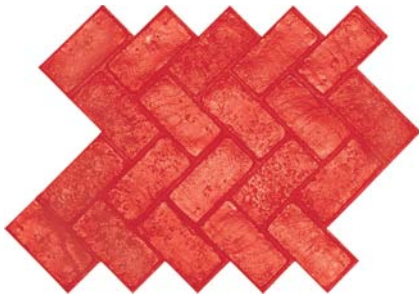
FM540-B	Rental Class # F432	\$185.00
FM540-F	Flex Stamp Rental Class # F411	\$98.00
FM560-B	London Cobble Strip Rental Class # F433	\$110.00
Rental Rates		
Daily	Weekly	Monthly
\$15	\$55	\$135

15.5" X 30.5" Basket Weave Used Brick



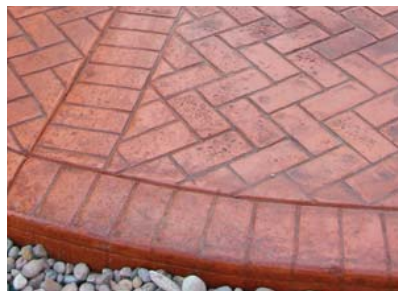
FM5200-B	Rental Class # F460	\$230.00
FM5200-FB	Flex Stamp Rental Class # F488	\$115.00
Rental Rates		
Daily	Weekly	Monthly
\$15	\$55	\$135

32" X 36" Herringbone Used Brick



FM5000-R	Rental Class # F429	\$230.00
FM5000-FR	Flex Stamp Rental Class # F489	\$115.00
Rental Rates		
Daily	Weekly	Monthly
\$15	\$55	\$135

8.5" X 32.25" New Brick Border



FM5325-R	Rental Class # F431	\$146.00
Rental Rates		
Daily	Weekly	Monthly
\$15	\$55	\$135

24" X 24" Blue Stone Texture Skin



FM-A2M2N	Rental Class # F435	\$70.00
Rental Rates		
Daily	Weekly	Monthly
\$15	\$55	\$135

Rough Stone Texture Skin



FM-C2M2N	24" X 24"	\$70.00
Rental Rates		
Daily	Weekly	Monthly
\$15	\$55	\$135
FM-C5M2Y	60" X 60" Rental Class # F417	\$425.00
Rental Rates		
Daily	Weekly	Monthly
\$65	\$225	\$425

Slate Texture Skin



FM-9700FE	24" X 24" Rental Class # F415	\$70.00
Rental Rates		
Daily	Weekly	Monthly
\$15	\$55	\$135
FM-9800FE	36" X 36" Rental Class # F416	\$150.00
Rental Rates		
Daily	Weekly	Monthly
\$25	\$70	\$150
FM-3190FE	48" X 48" Rental Class # F427	\$293.00
Rental Rates		
Daily	Weekly	Monthly
\$55	\$195	\$275

Roman Slate Texture Skin



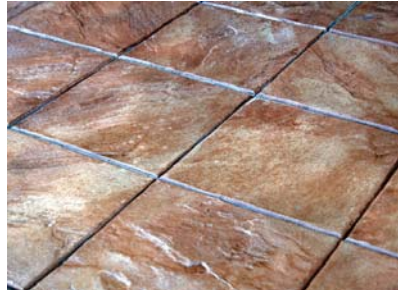
FM-H2M2N	24" X 24" Rental Class # F419	\$70.00
Rental Rates		
Daily	Weekly	Monthly
\$15	\$55	\$135
FM-H4M2Y	48" X 48" Rental Class # F420	\$254.00
Rental Rates		
Daily	Weekly	Monthly
\$55	\$195	\$275

4" X 8" Cut Stone Border



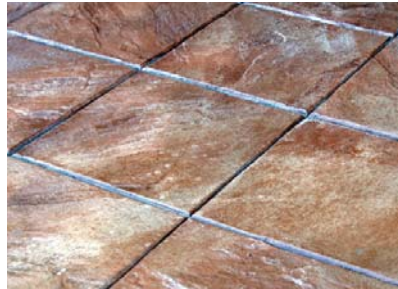
FM1225-R	Rental Class # F422	\$157.00
Rental Rates		
Daily	Weekly	Monthly
\$15	\$55	\$135

24" X 24" Cut Stone With 12" X 12" Tiles



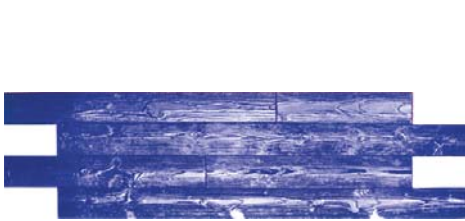
FM300	Rental Class # F425	\$194.00
FM300-F	Flex Stamp Rental Class # F494	\$98.00
Rental Rates		
Daily	Weekly	Monthly
\$15	\$55	\$135

24" X 36" Blue Stone With 12" X 12" Tiles



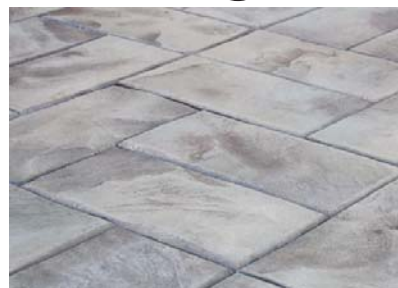
FM2350	Rental Class # F424	\$214.00
FM2350-F	Flex Stamp Rental Class # F443	\$106.00
Rental Rates		
Daily	Weekly	Monthly
\$15	\$55	\$135

81.5" x 21.75" Classic Wood With 6" Planks



FM-8700	Rental Class # F413	\$360.00
FM-8700F	Flex Stamp Rental Class # F480	\$133.00
Rental Rates		
Daily	Weekly	Monthly
\$55	\$195	\$275

24" X 36" New England Basket Weave



FM3600	Rental Class # F499	\$265.00
FM-3600F	Flex Stamp Rental Class # F500	\$133.00
Rental Rates		
Daily	Weekly	Monthly
\$15	\$55	\$135

10" X 10" Tamper For Texture Mats



FP-100		Rental Class # F436	\$132.00
Rental Rates			
Daily	Weekly	Monthly	
\$10	\$25	\$60	

1/4" Rounded Joint Touch Up Wheel



FM-6510		Rental Class # F531	\$35.00
Rental Rates			
Daily	Weekly	Monthly	
\$2.50	\$8.75	\$21.50	

3/16" Flat Joint Touch Up Wheel



FM-6520		Rental Class # F530	\$35.00
Rental Rates			
Daily	Weekly	Monthly	
\$2.50	\$8.75	\$21.50	

3/8" Sanded Joint Touch Up Wheel



FM-6540		Rental Class # F532	\$45.00
Rental Rates			
Daily	Weekly	Monthly	
\$2.50	\$8.75	\$21.50	

1 1/2" Aluminum Chisel For Stamped Concrete



A-805		Rental Class # F529	\$25.75
Rental Rates			
Daily	Weekly	Monthly	
\$5.00	\$17.50	\$45.00	

4" Aluminum Chisel For Stamped Concrete



A-803		Rental Class # F528	\$25.75
Rental Rates			
Daily	Weekly	Monthly	
\$5.00	\$17.50	\$45.00	

8" Aluminum Chisel For Stamped Concrete



A-800		Rental Class # F527	\$34.75
Rental Rates			
Daily	Weekly	Monthly	
\$5.00	\$17.50	\$45.00	

12" Aluminum Chisel For Stamped Concrete



A-705		Rental Class # F526	\$53.75
Rental Rates			
Daily	Weekly	Monthly	
\$5.00	\$17.50	\$45.00	

Chemical Rollers & Applicators

Part #	Description	Price
51034	3" Roller Cage Frame	\$2.25
51094	9" Roller Cage Frame Heavy Duty	\$4.15
148RF18HD	18" Reinforced Roller Frame (5 Wire Frame)	\$52.50
149RG165	18" Solvent Resistant Roller Tray - 5 Gallon Cap.	\$14.25
148RF18LW	18" Roller Frame (No Wire Frame)	\$21.75
1499030	9" Metal Roller Tray	\$4.35
11266	3" Roller Cover - 3/8" Nap	\$.99
149B225	9" Pro One Coat - 1/4" Nap	\$2.09
149B275	9" Pro One Coat - 3/4" Nap	\$2.75
148RC1834	18" Roller Cover - 3/4" Nap PVC Core	\$5.85
6002992	Paint Strainer For 5 Gal. Pail & Pump Up Sprayer	\$22.95
149R001	10" x 11-1/2" Wire Paint Screen For 5 Gal. Bucket	\$3.49
148A12	12" Lambswool Pad Only	\$8.65
148A16	16" Lambswool Applicator Pad	\$9.75
148AB12	12" Lambswool Applicator & Pad - 3/4" Nap	\$10.25
148AB16	16" Lambswool Applicator & Pad - 3/4" Nap	\$12.95

Overlay Accessories


HC178	Spiked Shoes With Adjustable Nylon Straps	\$14.95
GG478	18" Super Spike Roller With Frame	\$98.25
CC975-01	Gauge Rake Without Handle - Adj. up to 2"	\$34.25
MR-57001	24" Cam Gauge Rake With 66" Aluminum Handle	\$66.95
MR-57082	1/8" Replacement Cam For Gauge Rake - 3 settings	\$21.95
MR-57084	1/4" Replacement Cam For Gauge Rake - 3 settings	\$21.95
MR-57086	3/8" Replacement Cam For Gauge Rake - 3 settings	\$21.95
MR-78907	24" Flexible Blade Smoother With 66" Handle	\$54.65
GG601	15 Gallon Mixing Barrel With Locking Lid	\$61.75
897	24" Eggbeater Mixer With 7/16" Steel Hex Shaft	\$17.00

Surface Prep

E-ETCH	E-Etch Light Etching Product	\$28.00
ABOND1	1 Gallon Strong Bond Acrylic Bonder Glue	\$14.75
ABOND5	5 Gallon Strong Bond Acrylic Bonder Glue	\$63.00
13901	1 Gallon Weld Crete Concrete Glue	\$30.00
S7221	1 Gallon Stripper Supreme	\$27.00
C21	1 Gallon Orange Peel Cleaner, Stripper, Degreaser	\$30.50
22313	1 Gallon Concrete Cleaner & Degreaser	\$32.50

Concrete Colors, Stains & Sealers

 Texturotop Cementitious Topping		
Part #	Description	Price
2440090000	55# Stamp Grade	\$42.60
2450090000	55# Stencil Grade	\$42.60
248302880003	Autumn Beige Color Pack 2#	\$16.00
2483330266	Ash White Color Pack 2#	\$16.00
2483331136	Adobe Clay Color Pack 2#	\$16.00
24833335183	Stone Gray Color Pack 2#	\$16.00
2483333611	Oyster White Color Pack 2#	\$16.00
248333A25	Lacrescenta Color Pack 2#	\$16.00
248333A26	Brick Red Color Pack 2#	\$16.00
248333A27	Dark Red Color Pack 2#	\$16.00
248333A28	Tile Red Color Pack 2#	\$16.00
248333A29	Terra Cotta Color Pack 2#	\$16.00
248333A51	Steadman Buff Color Pack 2#	\$16.00
248333A57	Platinum Gray Color Pack 2#	\$16.00
248333A59	Beige Cream Color Pack 2#	\$16.00
248333C21	Adobe Tan Color Pack 2#	\$16.00
244HW20000	Texturotop Retarder Pack	\$3.25

 Chemstain Chemical Stain For Concrete		
Part #	Description	Price
1320-CS1-0014	Black 14 oz. <i>While quantities last</i>	\$18.25
1320-CS11-0014	Fern Green 14 oz. <i>While quantities last</i>	\$18.25
1320-CS12-0014	Weathered Bronze 14 oz. <i>While quantities last</i>	\$18.25
1320-CS13-0014	Copper Patina 14 oz. <i>While quantities last</i>	\$18.25
1320-CS14-0014	Dark Walnut 14 oz. <i>While quantities last</i>	\$18.25
1320-CS15-0014	Antique Amber 14 oz. <i>While quantities last</i>	\$18.25
1320-CS16-0014	Faded Terracotta 14 oz. <i>While quantities last</i>	\$18.25
1320-CS2-0014	Padre Brown 14 oz. <i>While quantities last</i>	\$18.25
CS1	Black 1 Gallon	\$75.75
CS2	Padre Brown 1 Gallon	\$75.75
CS11	Fern Green 1 Gallon	\$75.75
CS12	Weathered Bronze 1 Gallon	\$75.75
CS13	Copper Patina 1 Gallon	\$75.75
CS14	Dark Walnut 1 Gallon	\$75.75
CS15	Antique Amber 1 Gallon	\$75.75
CS16	Faded Terracotta 1 Gallon	\$75.75
1350-0000-0001	1 Gallon Enhancer	\$21.30
1350-0000-0005	5 Gallon Enhancer	\$98.40
9013-0000-0001	Chemstain DVD & Interactive Training Program	\$57.75




 Color Hardener 50# Pail - Coverage Of 100 Sq. Ft.		
Part #	Description	Price
1110-0266-5044P	Ash White	\$49.95
1110-3611-5044P	Oyster White	\$49.95
1110-4948-5044P	Smoke Beige	\$49.95
1110-5183-5044P	Stone Gray	\$49.95
1110-5921-5044P	Walnut	\$49.95
1110-A-21-5044P	Deep Charcoal	\$49.95
1110-A-24-5044P	Russet	\$49.95
1110-A-25-5044P	La Crescenta Brown	\$49.95
1110-A-26-5044P	Brick Red	\$49.95
1110-A-27-5044P	Dark Red	\$49.95
1110-A-28-5044P	Tile Red	\$49.95
1110-A-29-5044P	Terra Cotta	\$49.95
1110-A-33-5044P	Classic Gray	\$49.95
1110-A-50-5044P	Slate Gray	\$49.95
1110-A-51-5044P	Steadman Buff	\$49.95
1110-A-53-5044P	Arizona Tan	\$49.95
1110-A-55-5044P	Pecan Tan	\$49.95
1110-A-57-5044P	Platinum Gray	\$49.95
1110-A-59-5044P	Beige Cream	\$49.95
1110-5758-5044P	Weathered Sage	\$49.95

 Chromix Admixture Color 1 Bag 1 Yard 6-Sack Concrete Sack		
Part #	Description	Price
1391266	Cool Grey 6-Sack	\$52.25
1395130	Spring Beige 6-Sack	\$52.25
1396063	Winter Beige 6-Sack	\$52.25
139C11	Desert Sand 6-Sack	\$52.25
139C12	Mesa Beige 6-Sack	\$52.25
139C14	French Grey 6-Sack	\$52.25
139C15	Coachella Sand 6-Sack	\$52.25
1393987	Porcelain Gray 6-Sack	\$52.25
1390288	Autum Beige 6-Sack	\$96.75
139C20	Limestone 6-Sack	\$96.75
139C21	Adobe Tan 6-Sack	\$96.75
139C24	Charcoal 6-Sack	\$96.75
139C25	Sombrero Buff 6-Sack	\$96.75
139C27	Westwood Brown 6-Sack	\$96.75
1395234	Summer Beige 6-Sack	\$96.75
139C32	Quarry Red 6-Sack	\$138.95
139C34	Dark Grey 6-Sack	\$138.95
1395238	Sunbaked Clay 6-Sack	\$138.95
1395059	Sorrento Red 6-Sack	\$138.95
139C31	Shadow Slate 6-Sack	\$138.95



 Release Agent (Shake On) 30# Pail - Coverage Of 700 - 1000 Sq. Ft.		
Part #	Description	Price
1390669	Brick Red	\$83.50
1391502	Classic Grey	\$83.50
1391503	Deep Charcoal	\$83.50
1391504	Platinum Gray	\$83.50
1391505	Beige Cream	\$83.50
1391506	Smoke Beige	\$83.50
1391507	Slate Gray	\$83.50
1391508	Stone Gray	\$83.50
1391509	Arizona Tan	\$83.50
1391510	Russet	\$83.50
1391511	Steadman Buff	\$83.50
1391512	La Crescenta Brown	\$83.50
1391513	Pecan Tan	\$83.50
1391515	Terra Cotta	\$83.50
1391517	Walnut	\$83.50

5 Gallon Pail Coverage 600 - 700 Sq. Ft. (Liquid)		
FMLR-5	Liquid Clear	\$120.00

 Tinte' D'Acqua Concrete Stain Covers 200 - 300 Sq. Ft. Per Gallon		
Part #	Description	Price
SGS WBS10	Patina 1 Gallon	\$65.00
SGS WBS12	Tuscan 1 Gallon	\$65.00
SGS WBS13	Canyon 1 Gallon	\$65.00
SGS WBS15	Gulf 1 Gallon	\$65.00
SGS WBS19	Granada 1 Gallon	\$65.00
SGS WBS23	Roma 1 Gallon	\$65.00
SGS WBS24	Aged Bronze 1 Gallon	\$65.00
SGS WBS26	Magnet 1 Gallon	\$65.00
SGS WBS27	Baltic 1 Gallon	\$65.00
SGS WBS30	Pewter 1 Gallon	\$65.00
SGS WBS31	Coral Red 1 Gallon	\$65.00
SGS WBS33	Mediterranean 1 Gallon	\$65.00
SGS WBS35	Metalica 1 Gallon	\$65.00
SGS WBS36	Walnut 1 Gallon	\$65.00
SGS WBS38K	Sample Kit - 28 colors	\$59.00

 Concrete Sealer 		
Covers 200 Sq. Ft. Per Gallon		
Part #	Description	Price
1632-0000-0001	1 Gallon Cureseal "S" Matte	\$51.75
1641S10000	1 Gallon Cureseal "S" Gloss	\$51.75
1641S50000	5 Gallon Cureseal "S" Gloss	\$245.75
162300000005	5 Gallon Cureseal "W" Semi-Gloss	\$179.75
1390000	5 Gallon Cementone	\$191.75
1390001	1 Gallon Cementone	\$41.75
139470	5 Gallon Spectrum	\$99.75
139471	1 Gallon Spectrum	\$21.75
139268	5 Gallon Crystal Seal	\$154.25
139269	1 Gallon Crystal Seal	\$33.75
01804	4 Oz. Jar Non-Skid Texture Additive	\$5.25

PRICES SUBJECT TO CHANGE WITHOUT NOTICE

nu way®

Everything for the Contractor!

Abrasive Blades And Disc
Air Compressors And Hose
Anchor Bolts
Bolt and Wire Cutters
Brooms And Brushes
Carpenter Tools And Accessories
Caulk And Adhesives
Chain And Accessories
Chainsaws, Parts And Accessories
Channel And Deck Drain
Chutes-Concrete And Trash
Column Forms
Concrete Chemicals
Concrete Cures And Sealers
Concrete Forms And Accessories
Concrete Pre-mix And Patch
Concrete Restoration Products
Concrete Tools And Accessories
Construction Equipment
Coolers, Cups And Thirst Quencher
Curing Blankets
Demolition Saws
Diamond Blades And Bits
Drain Tile
Drywall And Deck Screws
Drywall Tools And Accessories

Electric Power Tools
Epoxy Grout And Bonding Agents
Expansion Joint Fillers
Extension Cords And Accessories
Fire Extinguishers
Form Release Agents
Form Rental And Layouts
Form Ties And Hardware
Foundation, Driveway And Roof Coatings
Fuel Cans And Funnels
Generators And Pumps
Grouts And Floor Products
Hand Tools
Injection Epoxy
Insulation Foam
Jobsite Storage Equipment
Ladders And Accessories
Lasers And Transits
Light Towers
Lumber And Plywood
Masonry Tools And Accessories
Mechanical Anchors
Mortar And Concrete Mixers
Nails And Staples
Pavement Breakers
Pneumatic Nailers And Staplers

Polyethylene Films
Portable Heaters
Powder Actuated Tools And Accessories
Power Screeds
Power Tools
Power Trowels
Pressure Washers
Rebar Fabrication And Detailing
Reinforcing Bars And Wire Mesh
Rubber Boots And Rain Suits
Safety Equipment
Saw Blades
Scaffolds
Shovels
Stabilization Fabrics
Structural Connectors
Tarpaulins
Tie Wire
Truck And Van Storage Equipment
Vacuums
Vibrators And Compactors
Water Pumps And Hose
Waterproofing
Welders
Wheelbarrows
Work Clothing

nu way® Rents

- Air Compressors And Breakers
- Backhoes
- Bobcat Loaders And Attachments
- Compaction Equipment
- Concrete Forms
- Concrete Saws
- Generators And Pumps
- Landscaping Equipment
- Lasers And Transits
- Light Towers
- Power Tools
- Scaffolding

