

# Stamp Rental Catalog 2024

# nu way Rents



4190 Hoffmeister Ave. **St. Louis, MO** 63125-2298  
314.544.1214 • FAX 314.544.1656 • 800.542.1214

3100 South Ten Mile Dr. **Jefferson City, MO** 65109-1013  
573.893.8766 • FAX 573.893.8737 • 800.345.9154

4788 Old Cape Road East **Jackson, MO** 63755-3816  
573.204.0100 • FAX 573.204.0411 • 800.599.9854

115 Resource Drive **Wentzville, MO** 63385-1560  
636.327.8877 • FAX 636.327.4944 • 888.999.6883

7651 East Resource Drive **Troy, IL** 62294-3177  
618.288.3400 • FAX 618.288.3410 • 888.315.1100

**nuwayinc.com** • Hours Mon - Fri 7 AM - 5 PM Sat 8 AM - 12 PM

stamp\_rental\_catalog\_2024 10/10/24

## FM5325 8.5" x 32.25" New Brick Border

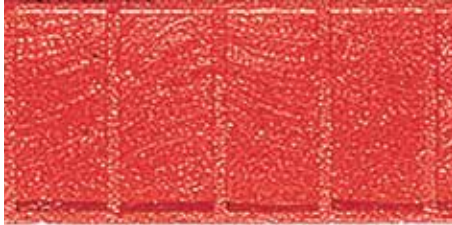


**Rental Rates** Day \$15 Week \$55 Month \$135

Includes:

- 1 Flex Stamp

Rental Class # F431



Suggested Roller: **TW-7**

## TM700 Flagstone Set

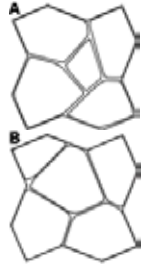
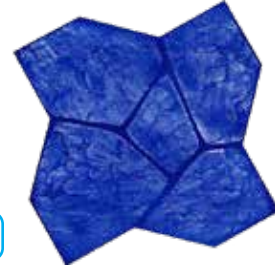


**Rental Rates** Day \$140 Week \$500 Month \$1,300

Includes:

- 3 A Stamps
- 3 B Stamps
- 1 Flex A Stamp
- 1 Flex B Stamp

Rental Class # F313



Suggested Roller: **TW-6**

## FM100 Rough Cut Ashlar Set



**Rental Rates** Day \$165 Week \$575 Month \$1,450

Includes:

- 3 Red Stamps
- 3 Blue Stamps
- 3 Yellow Stamps
- 2 Flex Stamps

Rental Class # F311



Suggested Roller: **TW-2**

## FM650 European Fan Set



**Rental Rates** Day \$140 Week \$500 Month \$1,300

Includes:

- 9 Standard Stamps
- 2 Flex Stamps

Rental Class # F314



Suggested Roller: **TW-2**

## FM3125 Ashlar Cut Slate Set



**Rental Rates** Day \$165 Week \$575 Month \$1,450

Includes:

- 3 Red Stamps
- 3 Blue Stamps
- 3 Yellow Stamps
- 2 Flex Stamps

Rental Class # F312



Suggested Roller: **TW-1**

## FM540 London Cobble Set

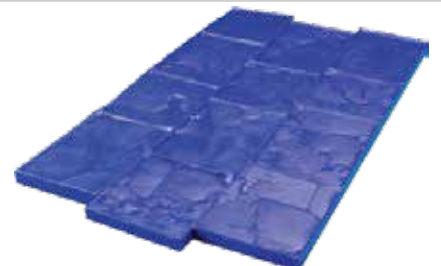


**Rental Rates** Day \$140 Week \$500 Month \$1,300

Includes:

- 9 Standard Stamps
- 2 Flex Stamps

Rental Class # F315



Suggested Roller: **TW-1**

### FM5200 Basket Weave Used Brick Set



**Rental Rates** Day \$140 Week \$500 Month \$1,300

- Includes:
- 9 Standard Stamps
  - 2 Flex Stamps

Rental Class # F316



Suggested Roller: **TW-4**

### FM2350 Blue Stone Set



**Rental Rates** Day \$140 Week \$500 Month \$1,300

24" x 36" with 12" x 12" Tiles

- Includes:
- 9 Standard Stamps
  - 2 Flex Stamps

Rental Class # F320



Suggested Roller: **TW-5**

### FM5150 Running Bond New Brick Set



**Rental Rates** Day \$140 Week \$500 Month \$1,300

- Includes:
- 9 Standard Stamps
  - 2 Flex Stamps

Rental Class # F318



Suggested Roller: **TW-4**

### FM8700 Classic Wood Set

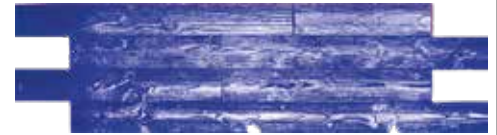


**Rental Rates** Day \$385 Week \$1,365 Month \$1,925

81.5" x 21.75" with 6" Planks

- Includes:
- 7 Standard Stamps
  - 1 Flex Stamp

Rental Class # F321



Suggested Roller: **TW-5**

### FM300 Cut Stone Set



**Rental Rates** Day \$140 Week \$500 Month \$1,300

24" x 24" with 12" x 12" Tiles

- Includes:
- 9 Standard Stamps
  - 2 Flex Stamps

Rental Class # F319



Suggested Roller: **TW-1**

### FM3600 New England Basket Weave Set



**Rental Rates** Day \$140 Week \$500 Month \$1,300

- Includes:
- 9 Standard Stamps
  - 2 Flex Stamps

Rental Class # F322



Suggested Roller: **TW-5**

## FM700 30 x 30 Random Stone Set



**Rental Rates** Day \$165 Week \$575 Month \$1,450

Includes:

- 3 Red Stamps
- 3 Blue Stamps
- 3 Yellow Stamps
- 2 Flex Stamps



Rental Class # F310

Suggested Roller: **TW-2**

## FM3200 24" x 24" Slate Texture



**Rental Rates** Day \$15 Week \$55 Month \$135

Includes:

- 3 Red Stamps
- 3 Blue Stamps
- 3 Yellow Stamps
- 2 Flex Stamps



Rental Class # F310

Suggested Roller: **TW-5**

## FM5000 Herringbone Used Brick Set



**Rental Rates** Day \$140 Week \$500 Month \$1,300

Includes:

- 9 Standard Stamps
- 2 Flex Stamps



Rental Class # F317

Suggested Roller: **TW-4**

## FM1225 4" x 8" Cut Stone Border



**Rental Rates** Day \$15 Week \$55 Month \$135

Includes:

- 1 Flex Stamp



Rental Class # F422

Suggested Roller: **TW-3**

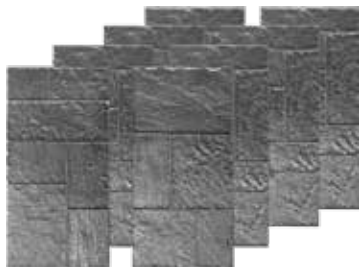
## PD400S Stones of Athens Set



**Rental Rates** Day \$195 Week \$685 Month \$1,725

Includes:

- (8) 47.75" x 23.875" Stamps
- (3) 24" x 24" Skins
- (1) 12" x 12" Skin
- (2) 47.75" x 23.875" Floppy
- (1) Touch up wheel



Rental Class # F323

Suggested Roller: **TW-7**

## Blue Stone Texture Skin



**Rental Rates**

F435 24" x 24" Day \$15 Week \$55 Month \$135

Includes:

- 1 Texture Skin



## Sanded Slate Texture Skin



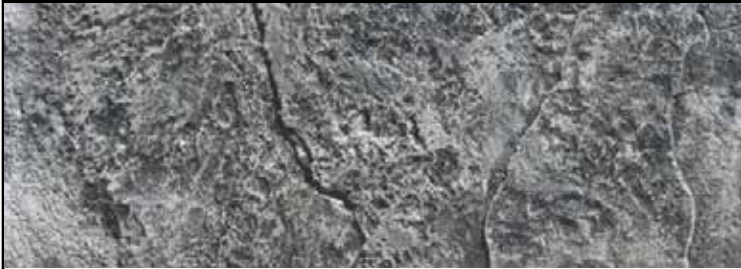
### Rental Rates

F415	<b>24" x 24"</b>	Day \$15	Week \$55	Month \$135
F416	<b>36" x 36"</b>	Day \$25	Week \$70	Month \$150
F427	<b>48" x 48"</b>	Day \$55	Week \$195	Month \$275

Includes:  
• 1 Texture Skin



## Rough Stone Texture Skin



### Rental Rates

F498	<b>24" x 24"</b>	Day \$15	Week \$55	Month \$135
F423	<b>48" x 48"</b>	Day \$55	Week \$195	Month \$275

Includes:  
• 1 Texture Skin



## Roman Slate Texture Skin



### Rental Rates

F419	<b>24" x 24"</b>	Day \$15	Week \$55	Month \$135
F420	<b>48" x 48"</b>	Day \$55	Week \$195	Month \$275

Includes:  
• 1 Texture Skin



## Cantilever Step Liner



### Available For Purchase Only

Includes:  
• Chiseled Face 2" Liner  
• Lightweight  
• Flexible  
• Easy to install  
• Durable and reusable



Cantilever Step Liner

## Ozark Barnwood Plank Set



<b>Rental Rates</b>	Day \$195	Week \$685	Month \$1725
---------------------	-----------	------------	--------------

Includes:  
• (2) 4.5' x 7" Yellow  
• (1) 4' x 14" Blue & Red  
• (1) 5' x 14" Blue & Red  
• (1) 6' x 14" Blue & Red  
• (2) 4' x 14" Floppy Red  
• (1) 2' x 14" Texture Skin  
• (1) 2' x 14" Texture Skin with Grout Lines



## QuickColor Granular System



- 600+ colors at the touch of a button
- Ability to match colors from several manufacturers
- 1 Yard per bag
- Unparalleled material quality with excellent flowability
- Water soluble bags, ready to add to the truck

**Same Day Pick Up in St. Louis, Wentzville & Jackson**  
Available by order at the Jefferson City & Troy stores

PRICES SUBJECT TO CHANGE WITHOUT NOTICE

## Joint Touch Up Wheels

Rental Rates Day \$2.50 Week \$8.75 Month \$21.50

- FM6510 1/4" Rounded F531
- FM6530 3/8" Flat F530
- FM6540 3/8" Sanded F532
- FM6550 1/2" Wedge F555
- FM6570 1/2" Sanded F533



## Aluminum Chisels For Stamped Concrete

Rental Rates Day \$5 Week \$17.50 Month \$45

- A805 1-1/2" F529
- A803 4" F528
- A800 8" F527
- A705 12" F526



## FP200 12" X 12" Tamper For Texture Mats

Rental Rates Day \$10 Week \$25 Month \$60



**Ask about our wide variety of concrete sealers**



# SAVE 25% ON STAMP SET RENTAL



With The Purchase  
Of Color Hardeners,  
Admixtures, or Releases



\*Must Be Purchased Within 3 Days Of  
The Out Date On The Rental Contract.

**BRICKFORM**  
A Division of Solomon Colors, Inc.

**stamp**  
DECORATIVE CONCRETE  
AUGMENTED REALITY >

**app**

Brickform StampApp

*Search for Brickform StampApp  
on the Apple iTunes Store or Google Play*

## Welcome to the future of Decorative Stamped Concrete

Using advanced augmented reality technology, you can create your own custom stamped concrete, using the most popular textures, colors, and stamp patterns Solomon Colors and Brickform has to offer. See how your favorite patterns and color combinations work with your home, from the convenience of your tablet or phone. Best of all... It's FREE to download and use.

Brickform StampApp also available for Windows computers! Just download the software, install, and start designing your hardscapes today!

[www.solomoncolors.com/stampapp.zip](http://www.solomoncolors.com/stampapp.zip)



# nu way®

## Everything for the Contractor!

Abrasive Blades And Disc  
Air Compressors And Hose  
Anchor Bolts  
Bolt and Wire Cutters  
Brooms And Brushes  
Carpenter Tools And Accessories  
Caulk And Adhesives  
Chain And Accessories  
Chainsaws, Parts And Accessories  
Channel And Deck Drain  
Chutes-Concrete And Trash  
Column Forms  
Concrete Chemicals  
Concrete Cures And Sealers  
Concrete Forms And Accessories  
Concrete Pre-mix And Patch  
Concrete Restoration Products  
Concrete Tools And Accessories  
Construction Equipment  
Coolers, Cups And Thirst Quencher  
Curing Blankets  
Demolition Saws  
Diamond Blades And Bits  
Drain Tile  
Drywall And Deck Screws  
Drywall Tools And Accessories

Electric Power Tools  
Epoxy Grout And Bonding Agents  
Expansion Joint Fillers  
Extension Cords And Accessories  
Fire Extinguishers  
Form Release Agents  
Form Rental And Layouts  
Form Ties And Hardware  
Foundation, Driveway And Roof Coatings  
Fuel Cans And Funnels  
Generators And Pumps  
Grouts And Floor Products  
Hand Tools  
Injection Epoxy  
Insulation Foam  
Jobsite Storage Equipment  
Ladders And Accessories  
Lasers And Transits  
Light Towers  
Lumber And Plywood  
Masonry Tools And Accessories  
Mechanical Anchors  
Mortar And Concrete Mixers  
Nails And Staples  
Pavement Breakers  
Pneumatic Nailers And Staplers

Polyethylene Films  
Portable Heaters  
Powder Actuated Tools And Accessories  
Power Screeds  
Power Tools  
Power Trowels  
Pressure Washers  
Rebar Fabrication And Detailing  
Reinforcing Bars And Wire Mesh  
Rubber Boots And Rain Suits  
Safety Equipment  
Saw Blades  
Scaffolds  
Shovels  
Stabilization Fabrics  
Structural Connectors  
Tarpaulins  
Tie Wire  
Truck And Van Storage Equipment  
Vacuums  
Vibrators And Compactors  
Water Pumps And Hose  
Waterproofing  
Welders  
Wheelbarrows  
Work Clothing

## nu way® Rents

- Air Compressors And Breakers
- Backhoes
- Bobcat Loaders And Attachments
- Compaction Equipment
- Concrete Forms
- Concrete Saws
- Generators And Pumps
- Landscaping Equipment
- Lasers And Transits
- Light Towers
- Power Tools
- Scaffolding



**nu way®  
Rents**  
**Rental  
Equipment Sale**

Current listing available online at [nuwayinc.com](http://nuwayinc.com) for download.

**Check out our  
selection of  
used rental  
equipment at  
[nuwayinc.com](http://nuwayinc.com)**

## AlturnaMATS®



Ask Our Rental Experts About Alturnamats and how they can protect your clients yards.